

Hospital grade disk silencers are best suitable for applications where a high level of sound attenuation is required. Disk silencers are excellent choices for housed applications where available space is limited and exhaust system heat rejection must be minimized. Typical sound attenuation for this grade is in the range of 33 to 40 dB(A) on diesel and gaseous fueled reciprocating industrial engines. Custom disk silencers are readily available with a multitude of options to meet your specific needs.

**Standard Features**

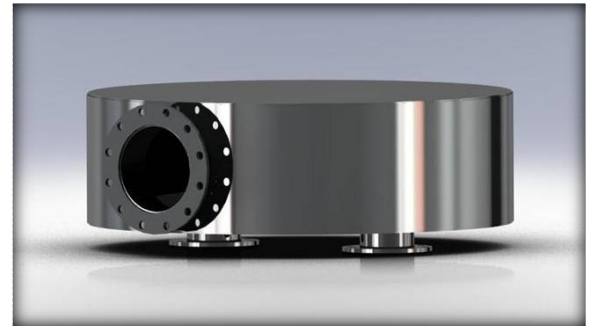
- Continuously welded heavy duty steel construction
- Internally insulated with 2" insulation on shell surfaces
- ANSI 125/150# flanges
- Four standard mounting lugs
- High temperature black finish – rated to 1000F

**Optional Features**

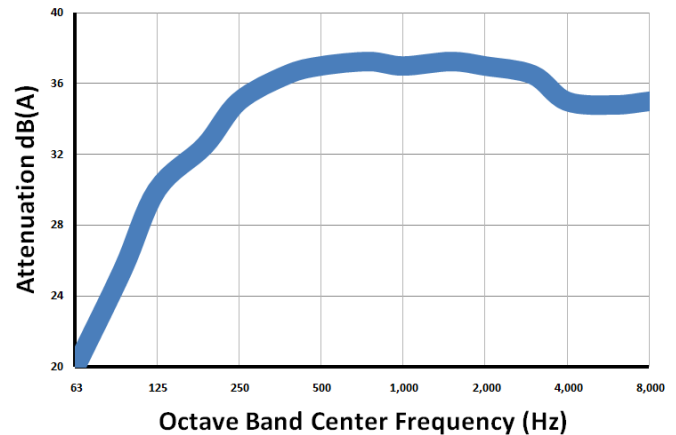
- Dual Inlets – special orientation to optimize installation fit-up
- Spark Arresting chamber
- ISO container top mount design
- Special flanges and port connections
- Support structures and brackets

**Material & Finishing options available**

- Metallized Aluminum Spray Coat Finish with 100% protected outer surfaces
- High Performance paint options
- External Insulation - High-Temp Silicone Impregnated Canvas
- Stainless Steel – 304, 316, 321



DSH-12 in 316 stainless

**Typical Sound Attenuation - DSH**

**DIMENSIONS (Inches)**

Model	A	B	C	D	E	F	G	H	I	BC	Lbs.
DSH-04	4.00	29	33	10	14	9	18.5	5	23.3	33	160
DSH-05	5.00	33	37	12	16	10	20.5	6	26.2	37	215
DSH-06	6.00	45	49	14	18	11	26.5	7	34.6	49	380
DSH-08	8.00	54	58	16	20	12	31	8	41	58	630
DSH-10	10.00	62	66	18	22	13	35	9	46.6	66	798
DSH-12	12.00	66	70	24	28	16	37	12	49.5	70	1056
DSH-14	14.00	72	76	26	30	17	40	13	53.8	76	1185
DSH-16	16.00	84	88	28	32	18	46	14	62.3	88	1655
DSH-18	18.00	96	100	30	34	19	52	15	70.8	100	2236
DSH-20	20.00	108	112	34	38	21	58	17	79.9	113	3150

