

Critical grade disk silencers are best suitable for applications where a substantial level of sound attenuation is required. Disk silencers are excellent choices for housed applications where available space is limited and exhaust system heat rejection must be minimized. Typical sound attenuation for this grade is in the range of 25 to 32 dB(A) on diesel and gaseous fueled reciprocating industrial engines. Custom disk silencers are readily available with a multitude of options to meet your specific needs.

**Standard Features**

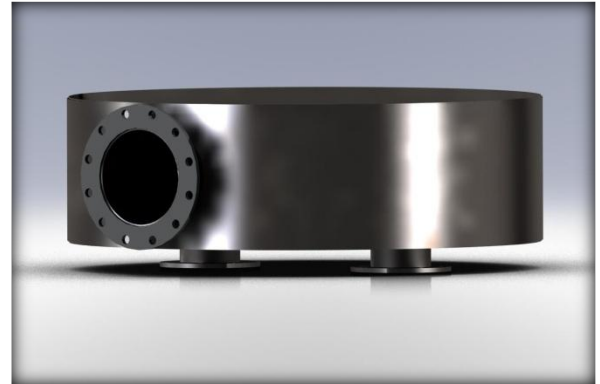
- Continuously welded heavy duty steel construction
- Internally insulated with 2" insulation on shell surfaces
- ANSI 125/150# flanges
- Four standard mounting lugs
- High temperature black finish – rated to 1000F

**Optional Features**

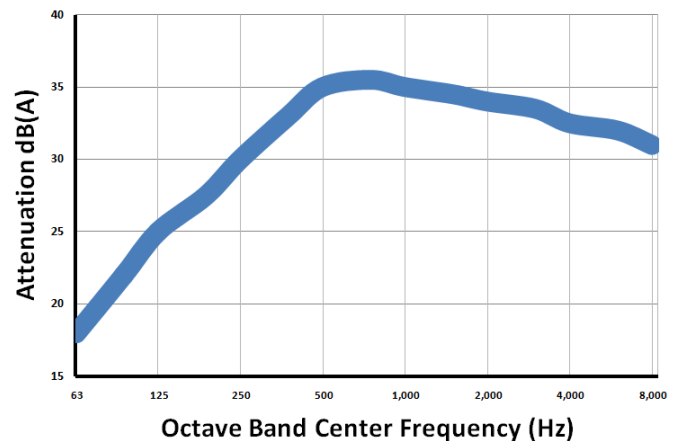
- Dual Inlets – special orientation to optimize installation fit-up
- Spark Arresting chamber
- ISO container top mount design
- Special flanges and port connections
- Support structures and brackets

**Material & Finishing options available**

- Metallized Aluminum Spray Coat Finish with 100% protected outer surfaces
- High Performance paint options
- External Insulation - High-Temp Silicone Impregnated Canvas
- Stainless Steel – 304, 316, 321



DSC-16 in 304 stainless

**Typical Sound Attenuation - DSC**

**DIMENSIONS (Inches)**

Model	A	B	C	D	E	F	G	H	I	BC	Lbs.
DSC-04	4.00	28	32	8	12	8	18	4	22.6	32	125
DSC-05	5.00	29	33	10	14	9	18.5	5	23.3	33	160
DSC-06	6.00	33	37	12	16	10	20.5	6	26.2	37	215
DSC-08	8.00	45	49	14	18	11	26.5	7	34.6	49	380
DSC-10	10.00	54	58	16	20	12	31	8	41.0	58	630
DSC-12	12.00	62	66	18	22	13	35	9	46.6	66	798
DSC-14	14.00	66	70	24	28	16	37	12	49.5	70	1056
DSC-16	16.00	72	76	26	30	17	40	13	53.8	76	1185
DSC-18	18.00	84	88	28	32	18	46	14	62.3	88	1655
DSC-20	20.00	96	100	30	34	19	52	15	70.8	100	2236

