

Hospital grade silencers are best suitable for applications where a high level of sound attenuation is required. Typical sound attenuation for this grade is in the range of 33 to 40 dB(A) on diesel and gaseous fueled reciprocating industrial engines.

Standard Features

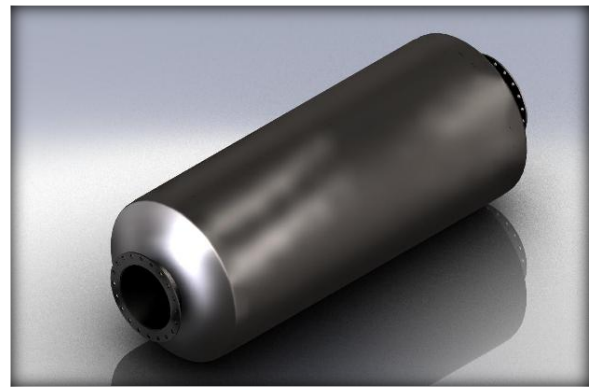
- Continuously welded heavy duty steel construction
- Dual chamber design
- Dual wall outer shell to reduce break out noise
- NPT connections up to 4" sizes
- ANSI 125/150# flanges 4" and larger
- High Temperature black finish – rated to 1000F

Optional Features & Configurations

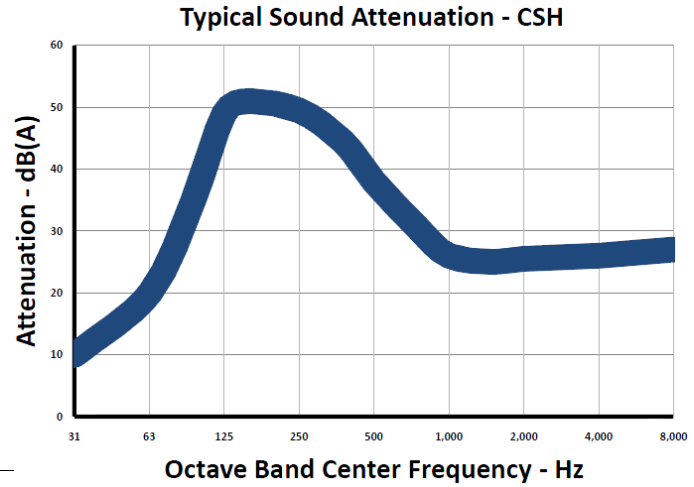
- Dual inlets
- Spark Arresting
- Special Flanges / Port Connections
- Mounting Brackets
- Support Structures

Material & Finishing options available

- Aluminized outer shell and external heads
- Metallized Aluminum Spray Coat Finish with 100% protected outer surfaces
- High performance paint options
- Custom Aluminum Lagging
- Stainless steel – 304, 316, 321



CSH-16 in 304 stainless



DIMENSIONS (Inches)

| Model | A | B | C | D | E | F | G | H | Lbs. |
|--------|-------|----|-----|-----|-----|----|----|-----|------|
| CSH-15 | 1.50 | 8 | 36 | 22 | 26 | 6 | 8 | 32 | 26 |
| CSH-02 | 2.00 | 10 | 40 | 30 | 30 | 6 | 9 | 36 | 35 |
| CSH-25 | 2.50 | 12 | 46 | 24 | 36 | 6 | 10 | 42 | 47 |
| CSH-03 | 3.00 | 14 | 58 | 48 | 50 | 6 | 11 | 56 | 78 |
| CSH-35 | 3.50 | 16 | 60 | 48 | 48 | 8 | 12 | 56 | 96 |
| CSH-04 | 4.00 | 18 | 66 | 54 | 56 | 8 | 13 | 64 | 126 |
| CSH-05 | 5.00 | 22 | 72 | 60 | 62 | 8 | 15 | 70 | 169 |
| CSH-06 | 6.00 | 26 | 84 | 72 | 72 | 10 | 17 | 82 | 306 |
| CSH-08 | 8.00 | 30 | 108 | 92 | 96 | 10 | 19 | 106 | 489 |
| CSH-10 | 10.00 | 36 | 120 | 102 | 104 | 12 | 22 | 116 | 712 |
| CSH-12 | 12.00 | 36 | 132 | 114 | 114 | 14 | 22 | 128 | 778 |
| CSH-14 | 14.00 | 42 | 144 | 126 | 124 | 16 | 25 | 140 | 1418 |
| CSH-16 | 16.00 | 42 | 156 | 138 | 134 | 18 | 25 | 152 | 1789 |
| CSH-18 | 18.00 | 48 | 174 | 156 | 150 | 20 | 28 | 170 | 2652 |
| CSH-20 | 20.00 | 54 | 186 | 162 | 160 | 22 | 31 | 182 | 3021 |
| CSH-22 | 22.00 | 60 | 204 | 180 | 176 | 24 | 34 | 200 | 3649 |
| CSH-24 | 24.00 | 64 | 216 | 192 | 186 | 26 | 36 | 212 | 4228 |
| CSH-26 | 26.00 | 68 | 240 | 216 | 208 | 28 | 38 | 236 | 5031 |
| CSH-28 | 28.00 | 72 | 270 | 246 | 236 | 30 | 40 | 266 | 5943 |
| CSH-30 | 30.00 | 78 | 288 | 258 | 252 | 32 | 43 | 284 | 8163 |

